



Datenblatt - Fiche technique - Data sheet

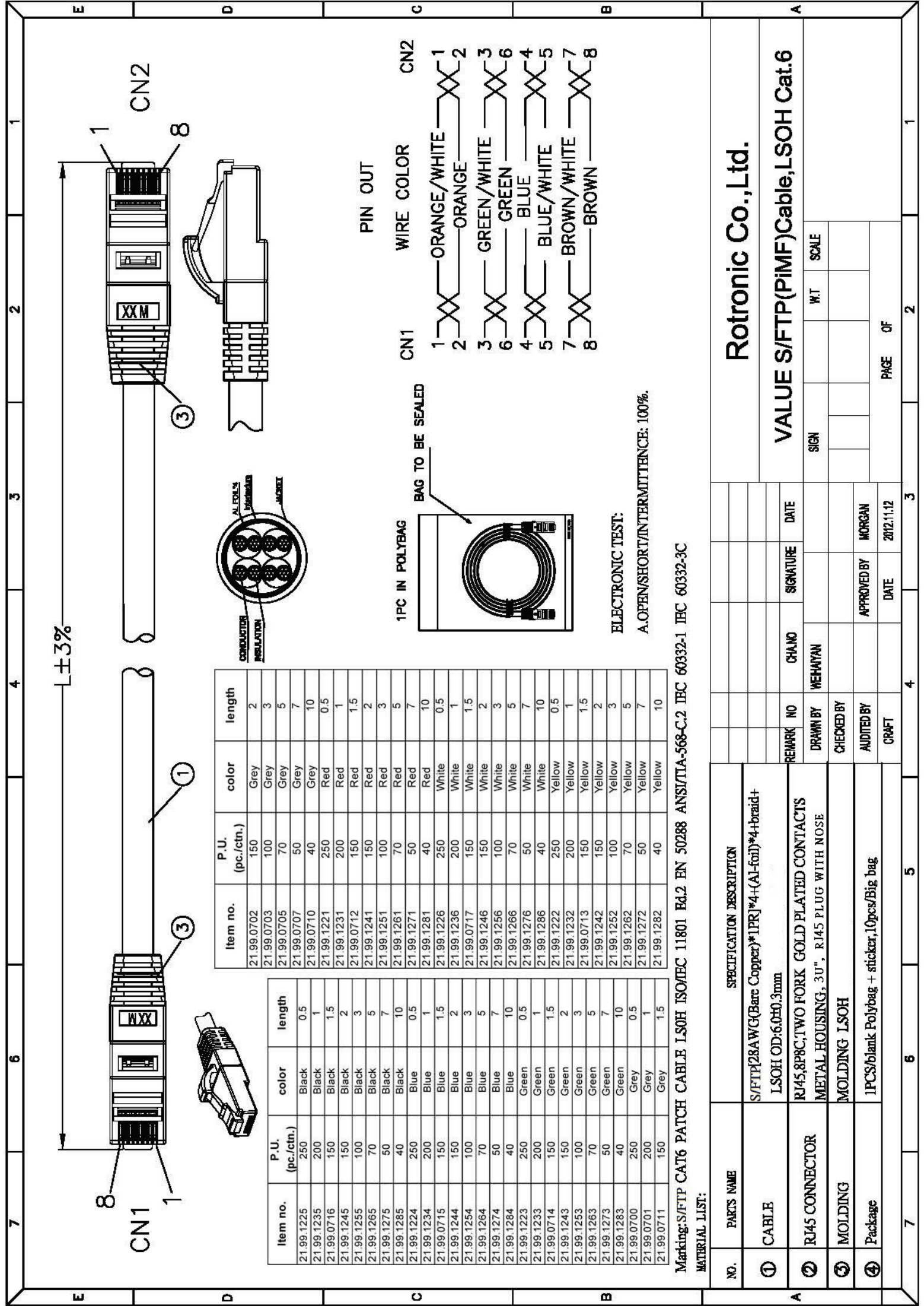
**21.99.0711**



VALUE S/FTP-(PiMF-)Patchkabel Kat.6, LSOH, grau, 1,5m

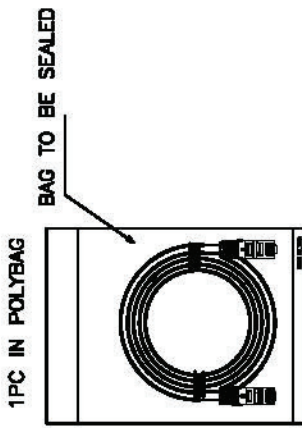
Cordon VALUE Cat.6 S/FTP LSOH gris, 1,5m

VALUE S/FTP Patch Cord Cat.6, halogen-free, grey, 1.5 m



PIN OUT

| CN1 | WIRE COLOR   | CN2 |
|-----|--------------|-----|
| 1   | ORANGE/WHITE | 1   |
| 2   | ORANGE       | 2   |
| 3   | GREEN/WHITE  | 3   |
| 6   | GREEN        | 6   |
| 4   | BLUE         | 4   |
| 5   | BLUE/WHITE   | 5   |
| 7   | BROWN/WHITE  | 7   |
| 8   | BROWN        | 8   |



ELECTRONIC TEST:  
A.OPEN/SHORT/INTERMITTENCE: 100%.

| Item no.   | P.U. (pc./ctn.) | color  | length |
|------------|-----------------|--------|--------|
| 21.99.0702 | 150             | Grey   | 2      |
| 21.99.0703 | 100             | Grey   | 3      |
| 21.99.0705 | 70              | Grey   | 5      |
| 21.99.0707 | 50              | Grey   | 7      |
| 21.99.0710 | 40              | Grey   | 10     |
| 21.99.1221 | 250             | Red    | 0.5    |
| 21.99.1231 | 200             | Red    | 1      |
| 21.99.0712 | 150             | Red    | 1.5    |
| 21.99.1241 | 150             | Red    | 2      |
| 21.99.1251 | 100             | Red    | 3      |
| 21.99.1261 | 70              | Red    | 5      |
| 21.99.1271 | 50              | Red    | 7      |
| 21.99.1281 | 40              | Red    | 10     |
| 21.99.1226 | 250             | White  | 0.5    |
| 21.99.1236 | 200             | White  | 1      |
| 21.99.0717 | 150             | White  | 1.5    |
| 21.99.1246 | 150             | White  | 2      |
| 21.99.1256 | 100             | White  | 3      |
| 21.99.1266 | 70              | White  | 5      |
| 21.99.1276 | 50              | White  | 7      |
| 21.99.1286 | 40              | White  | 10     |
| 21.99.1222 | 250             | Yellow | 0.5    |
| 21.99.1232 | 200             | Yellow | 1      |
| 21.99.0713 | 150             | Yellow | 1.5    |
| 21.99.1242 | 150             | Yellow | 2      |
| 21.99.1252 | 100             | Yellow | 3      |
| 21.99.1262 | 70              | Yellow | 5      |
| 21.99.1272 | 50              | Yellow | 7      |
| 21.99.1282 | 40              | Yellow | 10     |

| Item no.   | P.U. (pc./ctn.) | color | length |
|------------|-----------------|-------|--------|
| 21.99.1225 | 250             | Black | 0.5    |
| 21.99.1235 | 200             | Black | 1      |
| 21.99.0716 | 150             | Black | 1.5    |
| 21.99.1245 | 150             | Black | 2      |
| 21.99.1255 | 100             | Black | 3      |
| 21.99.1265 | 70              | Black | 5      |
| 21.99.1275 | 50              | Black | 7      |
| 21.99.1285 | 40              | Black | 10     |
| 21.99.1224 | 250             | Blue  | 0.5    |
| 21.99.1234 | 200             | Blue  | 1      |
| 21.99.0715 | 150             | Blue  | 1.5    |
| 21.99.1244 | 150             | Blue  | 2      |
| 21.99.1254 | 100             | Blue  | 3      |
| 21.99.1264 | 70              | Blue  | 5      |
| 21.99.1274 | 50              | Blue  | 7      |
| 21.99.1284 | 40              | Blue  | 10     |
| 21.99.1223 | 250             | Green | 0.5    |
| 21.99.1233 | 200             | Green | 1      |
| 21.99.0714 | 150             | Green | 1.5    |
| 21.99.1243 | 150             | Green | 2      |
| 21.99.1253 | 100             | Green | 3      |
| 21.99.1263 | 70              | Green | 5      |
| 21.99.1273 | 50              | Green | 7      |
| 21.99.1283 | 40              | Green | 10     |
| 21.99.0700 | 250             | Grey  | 0.5    |
| 21.99.0701 | 200             | Grey  | 1      |
| 21.99.0711 | 150             | Grey  | 1.5    |

Marking:S/FTP CAT6 PATCH CABLE LSOH ISO/IEC 11801 Ed.2 EN 50288 ANSI/TIA-568-C.2 IEC 60332-1 IEC 60332-3C

MATERIAL LIST:

| NO. | PARTS NAME     | SPECIFICATION DESCRIPTION   |
|-----|----------------|---|
| ①   | CABLE          | S/FTP28AWG(Bare Copper)*1PR]*4-(Al-foil)*4-braid+ LSOH OD:6.0H0.3mm             |
| ②   | RJ45 CONNECTOR | RJ45,8P8C,TWO FORK GOLD PLATED CONTACTS METAL HOUSING, 3U", RJ45 PLUG WITH NOSE |
| ③   | MOLDING        | MOLDING LSOH  |
| ④   | Package        | 1PCS/blank Polybag + sticker,10pcs/Big bag                                      |

| REMARK     |  | NO      | CHANO | SIGNATURE | DATE       |
|------------|--|---------|-------|-----------|------------|
| DRAWN BY   |  | WEHAYAN |       |           |            |
| CHECKED BY |  |         |       |           |            |
| AUDITED BY |  | MORGAN  |       |           |            |
| CRAFT      |  |         |       |           | 28/2.11.12 |

| SIGN |  | W/T | SCALE |
|------|--|-----|-------|
|      |  |     |       |

Rotronic Co.,Ltd.

VALUE S/FTP(PiMF)Cable,LSOH Cat.6